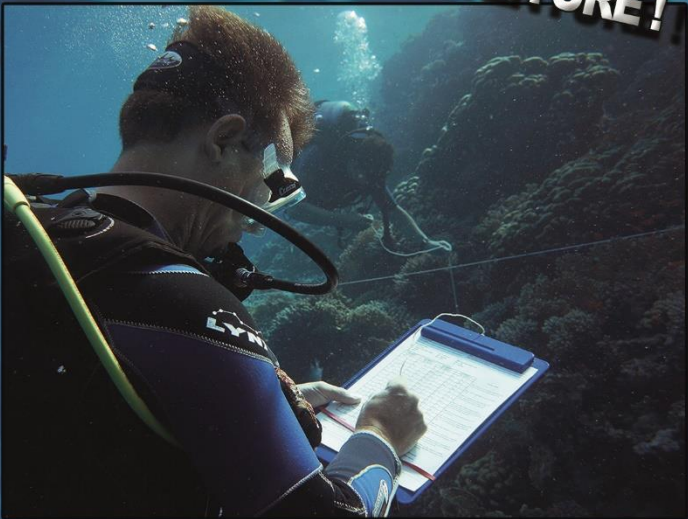




THE ECO-DIVING ADVENTURE!



- ★ Explore the great variety of coral reefs
- ★ Perceive human impacts upon ecosystems
- ★ Take part in reef examinations
- ★ Collect scientific data
- ★ REEF CHECK - Saving reefs worldwide

Course Fee: 300 €

The 4-day Eco Diver Course includes:

- ★ Eco Diver Kit
- ★ 4 Lectures
- ★ 8 Dives
- ★ Test
- ★ Reef Check Survey
- ★ Practise of buoyancy, methodology and species identification skills
- ★ Eco Diver Certificate

Requirements:

It is required to have good buoyancy skills and a minimum of 30 logged dives.
Language: English and german.

About REEF CHECK:
 REEF CHECK is the world's largest international coral reef monitoring organization involving volunteer recreational divers and marine scientists. REEF CHECK began in 1996 in order to survey the world's coral reefs using one standardized method so that survey results could be compared wherever they were carried out. These data about the health of coral reefs are essential to face and reverse the decline of the world's coral reef ecosystems. The REEF CHECK protocol is focused on the abundance of particular coral reef organisms that best reflect the condition of the ecosystem and that are easy to recognize by the public. The techniques are simple to learn and the data are scientifically robust. REEF CHECK serves as the first step in attracting participation in coral reef management activities. For more information please visit: www.reefcheck.org & www.reefcheck.de

Booking & Information:



Red Sea Diving Safari
 Cairo Head Office
 9 Degla St. (Off Shehab St.) Mohandseen, Giza – Egypt
 Tel.: +20-2-3337 1833 / 3337 9942
 Internet: www.redsea-divingsafari.com
 Email: info@redsea-divingsafari.com
 f Red Sea Diving Safari
 @ redsea.divingsafari

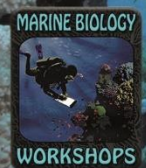


Marine Biology Workshops
 Course Leader: Dipl. biol. Stephan Moldzio
 Internet: www.greencorals.de
 Email: info@marinebiologyworkshops.de
 f Marine Biology Workshops
 @ green_corals

REEF CHECK Eco Diver Course

Red Sea Diving Safari
Marsa Shagra

17.07. - 20.07.2025



EcoDiver Course

REEF CHECK Survey

Indicator Organisms Fish

REEF CHECK Survey Methods Summary

FISH AND INVERTEBRATE BELT TRANSECTS

Dist	25m	50m	75m	100m
Count	Count	Count	Count	Count
Photo/Video	Photo/Video	Photo/Video	Photo/Video	Photo/Video

SUBSTRATE LINE TRANSECTS

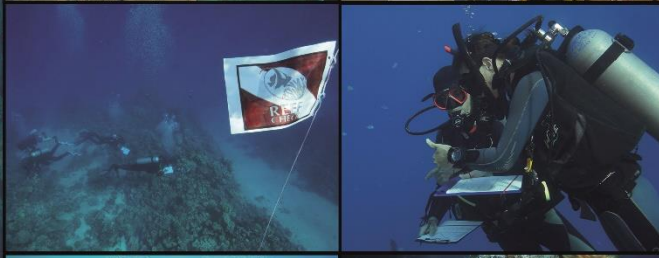
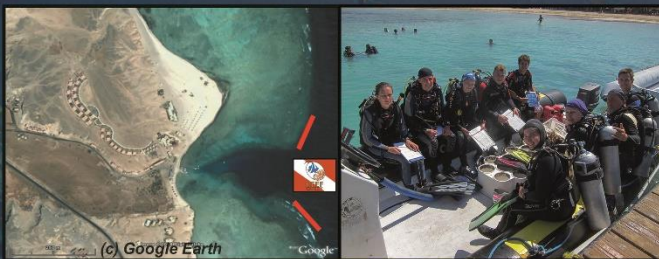
Substrate	Substrate	Substrate	Substrate
HC Hard Coral	RNC Reef	MC Mixed	NC Non-Coral

SUBSTRATE TYPES: HC Hard Coral, RNC Reef, MC Mixed, NC Non-Coral

(c) Reef Check



The course is conducted by marine biologist and REEF CHECK team scientist Stephan Moldzio. Upon successful completion of the course you will be certified as a REEF CHECK Eco Diver. The certification card qualifies you to participate in REEF CHECK surveys in the Indo-Pacific region and to submit data to the global database. You will learn a lot about fish, corals and invertebrates, coral reef ecology in general and about the threats to coral reefs today. Many participants have commented that their diving and their underwater perception has changed significantly since attending the course. Our first REEF CHECK course was conducted in February 2009 and our team has grown to 63 certified EcoDivers and 6 new Eco Diver Trainers (as of 8/2023). Participants came from all over the world: Egypt, Germany, Austria, Switzerland, England, France, Czech Republic, Denmark, Mexico, USA, Canada and Australia.



In 2009 REEF CHECK and RSDS have aligned themselves and we started a reefmonitoring program. Surveys at the most important dive sites of RSDS are conducted every year. RSDS as an official sponsor of REEF CHECK provides free diving during the course and the surveys. Red Sea Diving Safari is a long time pioneer in ecologically sustainable diving tourism in Egypt. Our team goal is to safeguard the healthy reefs in southern Egypt from damage caused by mass tourism and pollution. Check out our REEF CHECK reports at:

www.redsea-divingsafari.com & www.reefcheck.de

Photos & Layout © Stephan Moldzio



Off-Transect sightings



Invertebrates



Substrate

